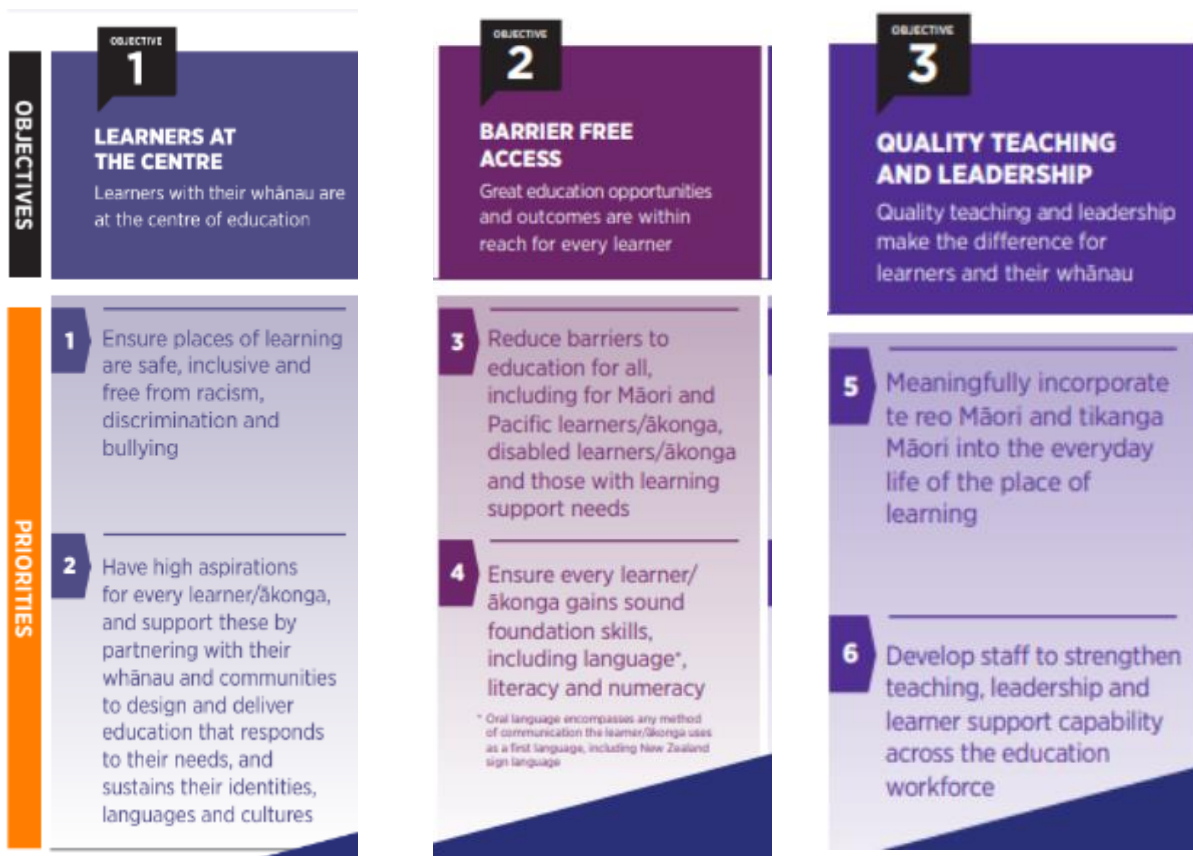


# Our Annual Implementation Plan 2024



## 1. STUDENT ACHIEVEMENT / LOCALISED CURRICULUM DEVELOPMENT

### a. LITERACY CURRICULUM *(Strategic Goals 1, 3 & 6, NELP Priorities 2, 3, 4 & 6)*

#### Professional Development in Structured Literacy (SL) with Liz Kane - All staff – Year 2

Continuing on from the success of each Team Inquiry last year, we will be working with Liz Kane again in 2024. The Deputy Principal (DP) and Structured Literacy Leader (SLL) will be the in-school Leads for this development, but Liz Kane will be employed as our resource person to provide guidance and support for this work (and to provide PD to upskill and empower the DP and SLL). DP and SLL will meet / email / speak to Liz Kane regularly.

An early staff meeting to be held in February to introduce our new Dibels assessment, and then in March (with Liz) to review the results.

DP and SLL to undertake coaching observations to provide feedback to teachers. SLL to complete IMSLE (Institute for Multi-Sensory Language Education) Training this year to support her Structured Literacy leadership (begins in April 2024).

Junior Team (plus SLL) to have PD in Little Learners Love Literacy in Term 2 (as their Structured Literacy needs differ from the rest of the school).

Teams to determine what the focus of their inquiry is to be, or what direction we need to take as a school.

Thought will be given towards assessment and reporting. This will develop throughout the year as we complete further PD in the area of SL.

A development plan to be formalised by the end of Term 1. This will include how we will meet the needs of those students who have additional learning needs (ie; via our SLip groups).

## **b. MATHEMATICS CURRICULUM** *(Strategic Goals 1, 2 & 6, NELP Priorities 2, 3, 4 & 6)*

### **Professional Development in Mathematics with Julia Tong - All Staff - Focus – Assessment**

2024 will be a continuation of our previous professional development focused on Mathematics, but with a focus on the 'Parkland way' of teaching & learning in the area of Mathematics.

This year we will work with Julia Tong who will help bring together the work we have done thus far. We will establish a local Mathematics Curriculum that reflects the needs of our students, as well as the priorities for our ongoing improvement, and key elements when reporting to parents.

We will make decisions around assessment and reporting via our Learner Profile, and gather feedback around its effectiveness.

## **2. FROM CULTURAL COMPETENCY TO RESPONSIVE PEDAGOGY**

### **Palmerston North East Kahui Ako - Poutama Pounamu / Rangitāne Iwi Development**

*(Strategic Goals 1, 4, & 5, NELP Priorities 1, 2, 3,5 & 6 )*

Aims:

- a. *Rangitāne Engagement*
  - Develop and expand knowledge of Rangitāne O'Manawatu
  - Build relationships between school staff and Rangitāne leaders
  - Enable future collaboration between schools and Rangitāne
- b. *Responsive Pedagogy*
  - Review 2023 schoolwide stocktake and identify next steps
  - Prepare for Responsive Pedagogy development cycles in 2024

### **ACTIONS**

The school's two Within Schools Teachers plus the Deputy Principal will complete the Rangitāne Tū, Rangitāne Ora programme with Kahui Ako partners, Tai Huki.

We have identified possible areas for further development from our Rongohia te Hau Surveys (with students, teachers, parents in 2023) such as:

- Bullying - Do we need to undertake more work for children and parents around 'what bullying is and is not', and secondly how do we get our students to tell us about any possible incidents of bullying.  
*We are undertaking a complete review of our Behaviour Policies and procedures in 2024.*
- Assessment Review - Is it time to review what we assess, how we assess and is how we report to parents still effective?  
*We are reviewing all assessment practices and the (eTap) Learner Profile as part of our review of Reporting to Parents.*
- Do whanau want to actually have more opportunities to meet with teachers to talk about progress, achievement, social development, behaviour and mastery of the Parkland Key Competencies.  
*This will form part of the review of the Learner Profile as above.*
- Block Names development  
*This is well underway and is part of the work we are undertaking with the refreshed curriculum and ANZ Histories development. This also links into our Parkland School 50<sup>th</sup> Jubilee celebrations.*

*Developed March 2024*