



Parkland Pride



The Newsletter of Parkland School
Term 1 Week 7 19th March 2026

Paper copies are available from the Office

Parkland School
41 Parkland Crescent
Palmerston North



Phone: (06) 358 1469

<https://www.parkland.school.nz/>
office@parkland.school.nz

Absences: Use the App



OFFICE MESSAGES

Term 2: Monday 20th April - Friday 3rd July

ANZAC Day observed Monday 27th April

MOE Teacher Only Days - Monday 18th May (Maths) and Friday 29th May (Literacy)

King's Birthday Monday 1st June

HEALTH REMINDER: As we head into the cooler months, we'd like to share a gentle reminder about keeping our school community healthy. We have several immunocompromised students at Parkland, and even common illnesses can be serious for them.

Please be mindful about sending children to school if they are unwell, including if they have a fever, vomiting, diarrhoea, or persistent cough. Your care and consideration help protect all our students and ensure everyone can feel safe and well at school.

Thank you for working with us to support the wellbeing of our Parkland community.

SECOND-HAND UNIFORMS: Second-hand uniforms will be outside the office Monday 23rd March, help yourself.

COMMUNICATION: Newsletters / School App are the key methods of communication. We need parents to expect the newsletters on alternate Thursdays and to pick out the information and dates that apply to you. Classes may use email and/or Seesaw to share class events, achievements and class related information.

PUPIL STATEMENTS: Statements were sent home last week. Stationery and Sports fees should have been paid by now. If you are having difficulty and would to set up a payment plan, please call Kath or Aimee. Many of our families have set up regular payments for this. Payments can be made using Eftpos at the school office or online. You can view your child's account on the school App which also shows our bank account information.

ERO: ERO's research centre wants to hear from parents and whānau about their children's use of AI, as part of a national project. Here is the link to a 5-min survey: [Parent survey AI in schools](#)

ERO's research centre wants to hear from parents and whānau about your experience at the school, as part of a project about supporting schools across the country. Here is the link to a 3-min survey: [Parent and whānau survey School supports](#)

From the Principal's Desk...

Nga matua ma nga kaitiaki,
Dear Parents and Caregivers,

Tomorrow we are having a combined day to show our support, and raise awareness for Heart Kids NZ and NZ Down Syndrome Association. We are encouraging children to wear something red or heart themed with their uniform, and finish it off with a colourful pair of socks! You can donate, via our Facebook page.

Then next Thursday 26th March is Purple Day for Epilepsy. To show our support we are encouraging children to wear something purple with their uniform, bring a gold coin and choose a ribbon or wristband!

Our Prefects will be helping promote both of these great causes.

This Saturday we are having a mini-working bee to spread the new bark under the adventure playground behind Room 11&12. We would really appreciate your help from 11:30am. This will involve spreading bark around the playground area. If you are able to help (even for a short time), please bring gloves, a wheelbarrow/shovel/rake. Thank you for helping care for our playground!

If you have any questions please email Anna:
a.soo@parkland.school.nz

Thank you.
Smiles,

Sonia Mudgway
Principal



Upcoming Dates:

Term 1

Also check out the Parent Calendar on our website.

20th March - Little Heart Day and Lots of Socks

- we are having a joint day to show our support, and raise awareness for Heart Kids NZ and NZ Down Syndrome Association. Wear something red or heart themed with your uniform, and finish it off with a colourful pair of socks! See how to donate, via our Facebook page.

20th March - PTA Sausage Sizzle Lunch

21st March - Working Bee 11:30am - spreading playground bark outside Rm11/12

26th March - Purple Day for Epilepsy - wear something purple with your uniform, bring a gold coin and choose a ribbon or wristband!

1st April - Whānau Connect Dinner Evening - 5pm-6:30pm (see poster)



If your child is involved in something cool outside of school, let us know!

STUDENT STARS



Well done to Madeleine and Lachlan for both getting player of the day recently! Ka Rawe!



Congratulations to our Strength Certificate recipients from Week 6. Ka pai!



Congratulations to our Value Voucher Draw winners from Week 6! Tino pai!



Congratulations to our Strength Certificate recipients from Week 5. Ka Rawe! Awesome work!



Congratulations to our Parkland Pride Puzzler winners from Week 5. Ka pai!

WELCOME



Amelia Rm10



Ocean Rm10



Amos Rm10



Gabriel Rm9

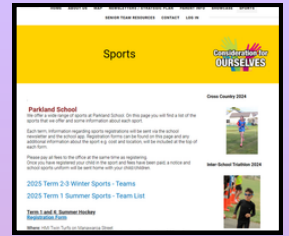
Special welcome to these children, and their whanau, who started with us recently. Nau mai, haere mai ki te Kura o Papa Whenua. Welcome to Parkland School.

We hope you enjoy your time here.

Term 2 Winter Sports

Registrations are now open for the following sports:

- Hockey - Year 1-6
- Table tennis - Year 4-6
- Basketball - Year 3-6
- Flippaball - Year 4-6



Please go to the school website to register. Please see the 'Sports' tab or click the link above.



Parkland School won a \$150 Rebel Sport voucher for having so many children participating in this series! Way to go, Parkland!

Holiday Programme - Hockey

Looking for an action-packed way to keep the kids active these school holidays? 'Time to Play' is the ultimate hockey holiday experience bursting with fun, friendships, and skill-building excitement! Your child will learn new skills, grow their confidence, and have an absolute blast along the way with a whole range of activities and coaches on offer.

Year 3-4 Holiday Programme:

- 10 April
- \$80
- A one-day explosion of fun, learning, and confidence building!
- Includes: T-shirt + Mini Golf
- Registration Link: <https://www.playhq.com/hockey-new-zealand/register/89a77a>



Year 5-6 Holiday Programme:

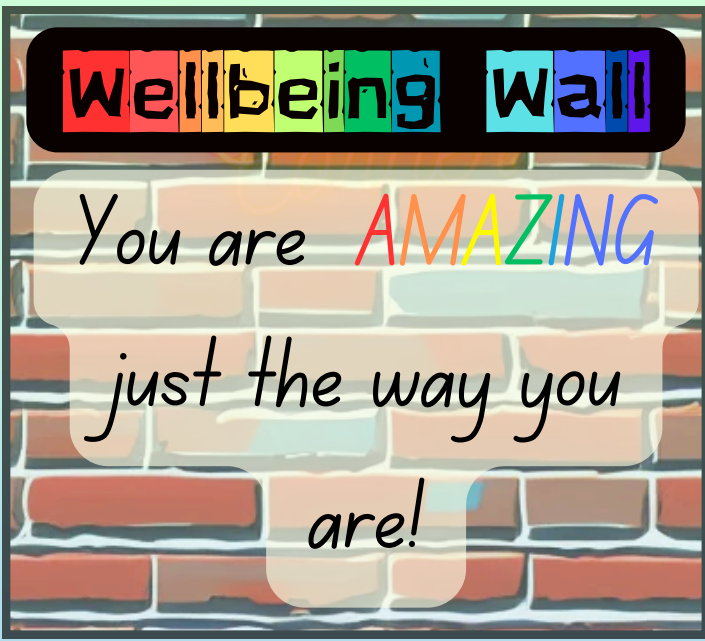
- 14-15 April
- \$150
- Two high-energy days packed with skill development and awesome activities!
- Includes: T-shirt + Mini Golf + Swimming
- Registration Link: <https://www.playhq.com/hockey-new-zealand/register/2fccfe>

Holiday Programme - Badminton

SHUTTLE TIME SCHOOL HOLIDAY PROGRAMME

SHUTTLETIME@MANAWATUBADMINTON.ORG.NZ





OUR SCHOOL BOARD:

Our next meeting is 26th March at 7pm in the staffroom.

For our **Policies and Procedures** please go to SchoolDocs:

Username: parkland p/w: rise (or use the link on our website)

Policies currently under review are:

- Alcohol, Drugs, and Other Harmful Substances Policy
- Sun Protection
- Digital Technology and Online Safety
- Cellphones and Other Personal Digital Devices

PTA ezlunch
Fresh, Easy Lunches
 Delivered to School!
Coming soon!

PTA

EVERY FRIDAY for the rest of Term 1 is **SAUSAGE SIZZLE Lunch Day**

Please order before school (between 8:30-8:50am) at the table outside the office - **CASH only please.**

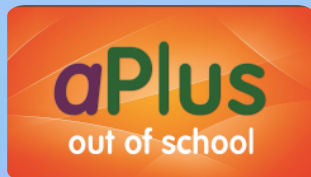
Prices are: sausage/bread \$2, large cookie \$2, small cookie \$1.

Something new is coming in Term 2... can you guess what it is?

OUT OF SCHOOL CARE

aPlus operate from our hall before and after school. Enrol online at www.aplus.kiwi.nz. If you have any questions please phone 0800 423 400 or email: admin@aplus.kiwi.nz

You can also click on the logo here to go straight to their website.



The Term One Raffle in the Office is ready to go. Only 100 tickets are available at \$2 each. Get in before you miss out!



Parkland Puzzler

Qu: What day can we wear purple with our uniform next week?



Parkland Puzzler

Write the answer, along with your name and room number, on a piece of paper and post it into the mailbox outside Mrs Mudgway's office.